



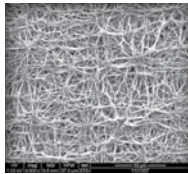
# GORE Sealant Technologies

## Comparison of PTFE-Based Sheet Gasketing Materials

Latest technology in the market

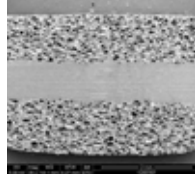
- Superior reliability and performance
- Wide application versatility

Gore ePTFE (1)



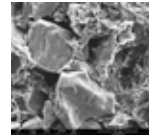
Node and Fibril

Microcellular PTFE



Foamed Powder

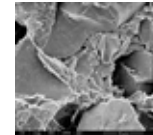
Barium Sulfate Filled PTFE



Powder and Filler

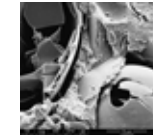
FILLED PTFE

Silica Filled PTFE



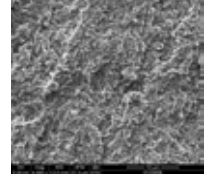
Powder and Filler

Glass Filled PTFE



Powder and Filler

Skived PTFE



Powder

### PERFORMANCE

Creep resistance*	★★★★★	★★	★★	★★	★★	★
Blowout safety*	★★★★★	★★	★★	★★	★★	★
Tightness*	★★★★★	★★★	★★	★★	★★	★
Conformability	★★★★★	★★★	★	★	★	★

### APPLICABILITY

<b>STEEL FLANGE</b>	★★★★★	★★★	★★★	★★★	★★★	★
High temp. (Max. 315°C / 600°F)	+	-	-	-	-	-
High pressure**	+	o	o	o	o	-
Thermal cycling	+	o	o	o	o	-
<b>MEDIA</b>	★★★★★	★★★★★	★★★★★	★★★★★	★★★★★	★★★★★
Acids	+	+	o	+	+	+
Bases	+	+	+	-	+	+
<b>FLANGE CONDITON</b>	★★★★★	★★★	★★	★★	★★	★★
Uneven / Damaged flange	+	o	-	-	o	o

OVERALL PERFORMANCE

HIGHEST RELIABILITY

LOWEST RELIABILITY

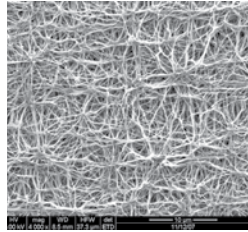
+ Broadly applicable o moderately applicable (with exceptions) - not applicable (1) ePTFE = expanded polytetrafluoroethylene

# Comparison of expanded PTFE (ePTFE) Sheet Gasketing Materials

Latest technology in the market

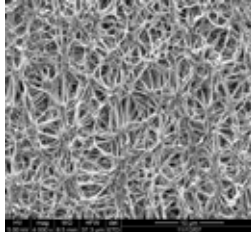
- Superior reliability and performance
- Wide application versatility

Gore ePTFE



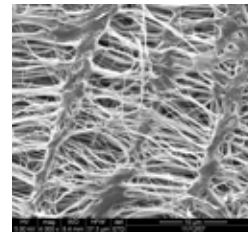
Node and Fibril

Other ePTFE



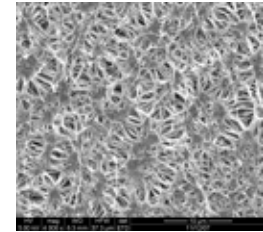
Node and Fibril

Other ePTFE



Node and Fibril

Other ePTFE



Node and Fibril

## SHEET GASKET QUALITY

Degree of expansion	★★★★★	★★★★	★★	★★
Product consistency	★★★★★	★★★	★★	★★

## PERFORMANCE

Creep resistance*	★★★★★	★★★	★★★	★★
Blowout safety*	★★★★★	★★★	★★★	★★★
Tightness*	★★★★★	★★★★	★★★	★★
Tensile strength	★★★★★	★★★	★★	★★★
Dimensional stability	★★★★★	★★★	★★	★★

## APPLICABILITY

<b>STEEL FLANGE</b>	★★★★★	★★★★	★★★	★★
High temp. (Max. 315°C / 600°F)	★★★★★	★★★★	★★★	★★
High pressure**	★★★★★	★★★★	★★★	★★★
Thermal cycling	★★★★★	★★★	★★★	★★
<b>CHEMICAL RESISTANCE</b>	★★★★★	★★★★★	★★★★★	★★★★★

OVERALL PERFORMANCE

HIGHEST RELIABILITY

LOWEST RELIABILITY

All technical information and advice given here is based on our previous experiences and/or test results. We give this information to the best of our knowledge, but assume no legal responsibility.

\* At elevated temperatures

\*\* For more details, please contact GORE® Gasketing Technical Support

North America/South America

W. L. Gore & Associates Inc. (USA)

Tel.: +1 800 654-4229

Fax: +1 410 506-8585

Email: sealants@wlgore.com

Europe/Middle East/Russia/Africa

W. L. Gore & Associates GmbH (Germany)

Tel.: +49 89 4612-2215

Fax: +49 89 4612-43780

Email: sealants\_EU@wlgore.com



[gore.com/sealants](http://gore.com/sealants)